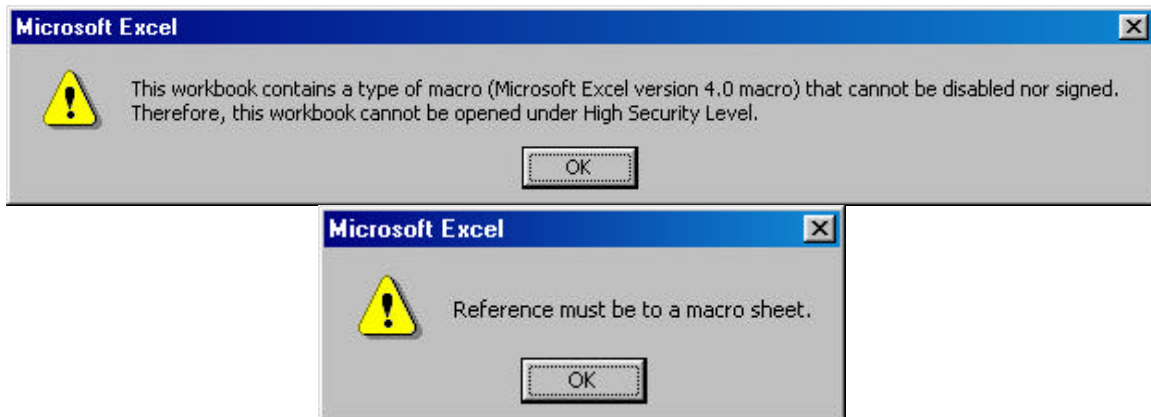


Problems in the Interface Between Microsoft Excel and Supertree/Sensitivity Caused by Security Updates

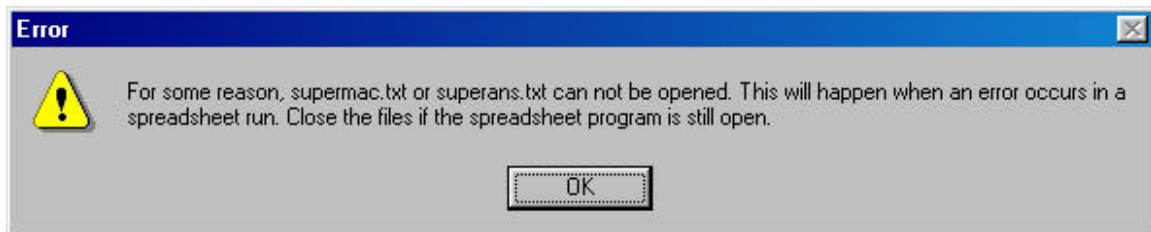
Microsoft has recently created safeguards against malicious code appearing in the form of macros that are attached to documents or spreadsheets. Supertree and Sensitivity interface with Microsoft Excel using a macro, and Excel's setting can affect the Evaluation option of Supertree/Sensitivity. The setting of this option may prevent Supertree and Sensitivity from performing evaluations.

In Excel 2000, go to the Tools menu, choose the Macro option and the Security sub-option; other versions of Excel may have the Security option elsewhere in the menu. This option will allow you to set the level of security used by the program.

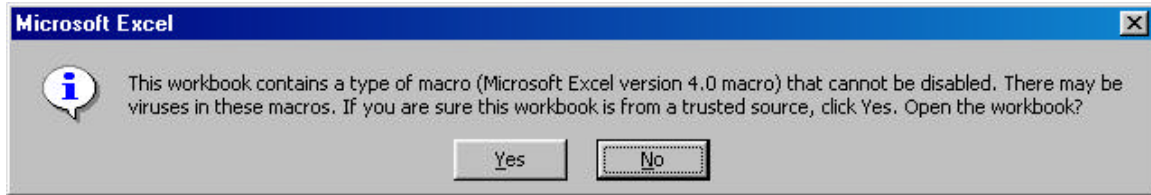
High Security: If you choose *High* security and then try to use the Excel interface with Supertree or Sensitivity to Evaluate using a spreadsheet, the program will *not* run successfully. You will receive the following two error messages from Excel:



After these two messages, the following error message from Supertree or Sensitivity will appear, indicating that the evaluation was *not* allowed.



Medium Security: If you choose *Medium* security, you will receive the following message from Excel. If you click Yes, the evaluation will proceed. You will receive the message each time a spreadsheet is opened by Supertree or Sensitivity.



Low Security: If you choose *Low* security, there will be no messages associated with security for Supertree or Sensitivity. You probably want to reset the security to at least *Medium* once you are finished with Supertree or Sensitivity runs.

Excel 97: Go to the Tools menu, choose the Options option, and under General, uncheck *Macro Virus Protection*.